

Advantech AE Technical Share Document

Date	2018 / 3 / 14	SR#	1-3380700171
Category	■FAQ □SOP	Related OS	N/A
Abstract	How to get or set ADAM IO status via SNMP?		
Keyword	ADAM-60XX, SNMP, trap, SNMP get, SNMP set, AI/O, DI/O		
Related Product	ADAM-6017, ADAM-6217, ADAM-6224 ADAM-6050, ADAM-6051, ADAM-6052, ADAM-6060, ADAM-6066 ADAM-6250, ADAM-6251 ,ADAM-6256, ADAM-6260, ADAM-6266		

■ **Problem Description:**

This document explains how use SNMP function to control ADAM module among ADAM-6000/6200 series.

■ **Answer:**

Below is the table for module support SNMP function. User need to check module have upgrade to the FW version below to have SNMP function.

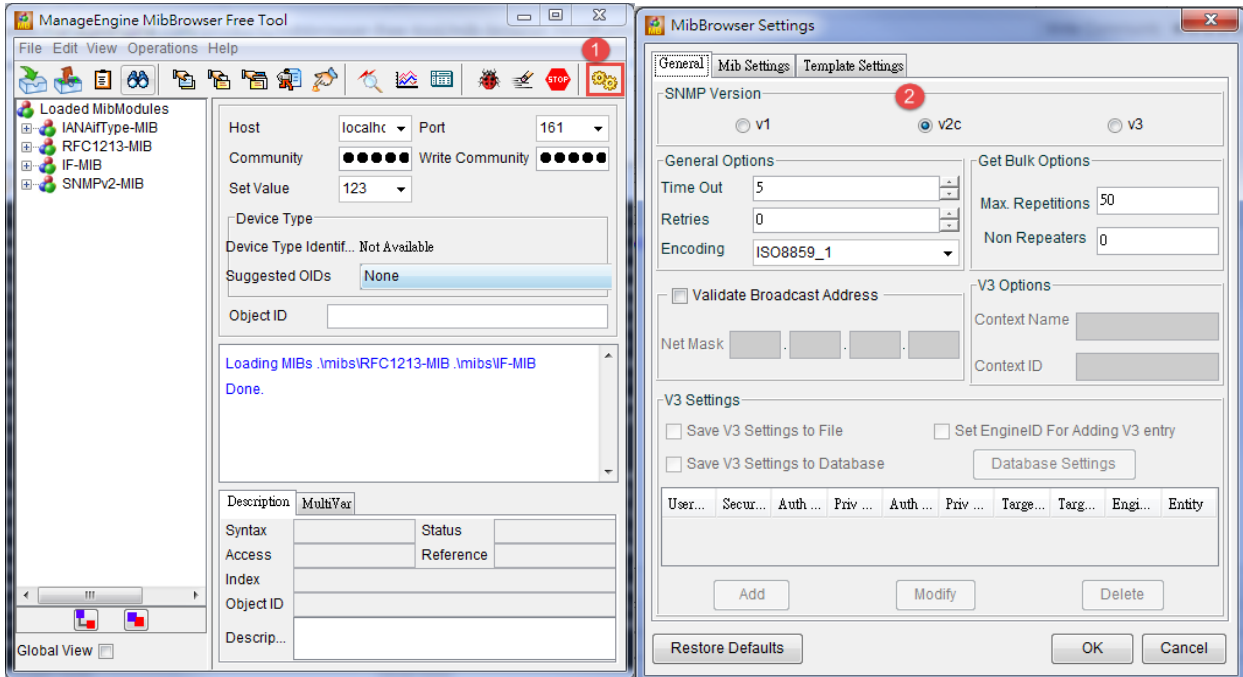
DIO Model	FW version	AIO Model	FW version
ADAM-6050/51/52/60/66-CE	After 5.06 B00	ADAM-6017-CE	After 5.04 B00
ADAM-6050/51/52/60/66-D	After 6.01 B11	ADAM-6217/6224-AE	After A1.06 B05
ADAM-6250/51/56/60/66-AE	After A1.06 B00		

MIB files: [advantech-IOcommon V1.00 B03.mib](#)

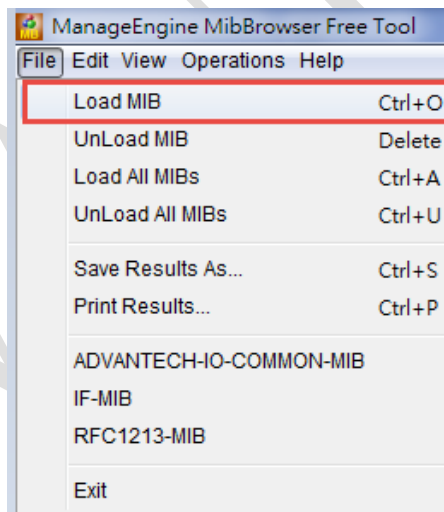
1. Use SNMP GET request to get I/O status of ADAM

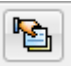
Below are the steps by steps of how to use SNMP GET request to get I/O status of ADAM.

- a. Download [MIB browser](#) and complete installation process
(<https://www.manageengine.com/products/mibbrowser-free-tool/mib-browser.html>)
- b. Configure MIB browser setting to correct SNMP version



c. Load MIB file “*advantech-IOcommon_V1.00 B03.mib*” into MIB browser



- d. Expand the MIB file in left column and select the item you want to monitor. Each item in MIB file has its unique OID address.
- e. Fill in below fields to get ADAM information by sending a SNMP request. Click “GET SNMP variable” icon  to send SNMP request to the specified OID.

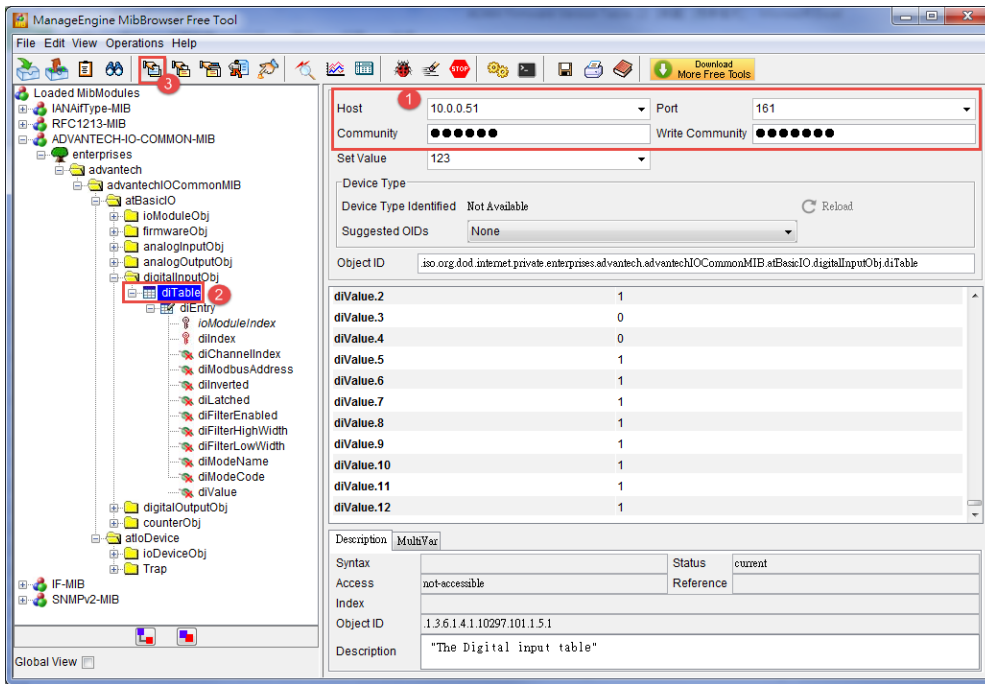
Host: Module IP

Port: 161 (send and receive)

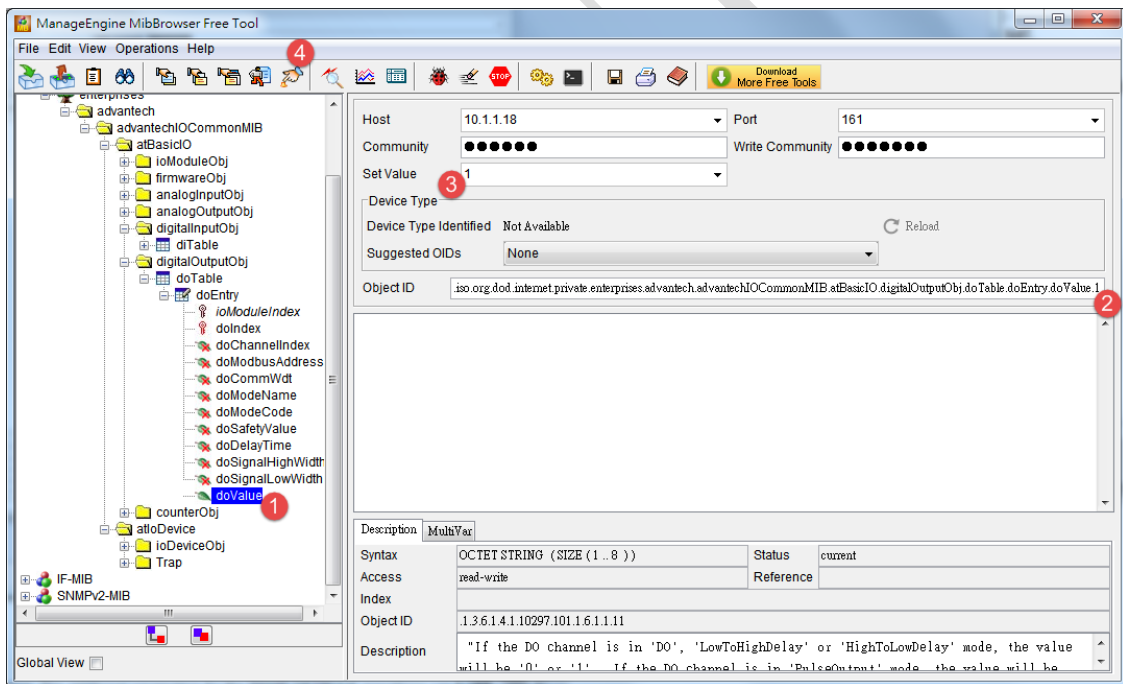
Community: public


Write community: private

f. You will see all the DI status show in MIB browser.

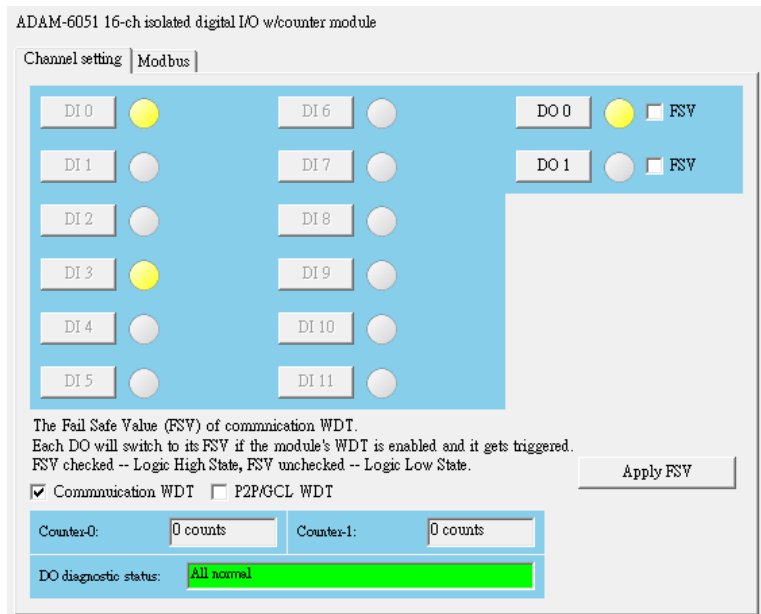


2. Use SNMP SET request to Set AO or DO channel of ADAM For DO module (Use ADAM-6051 as an example)

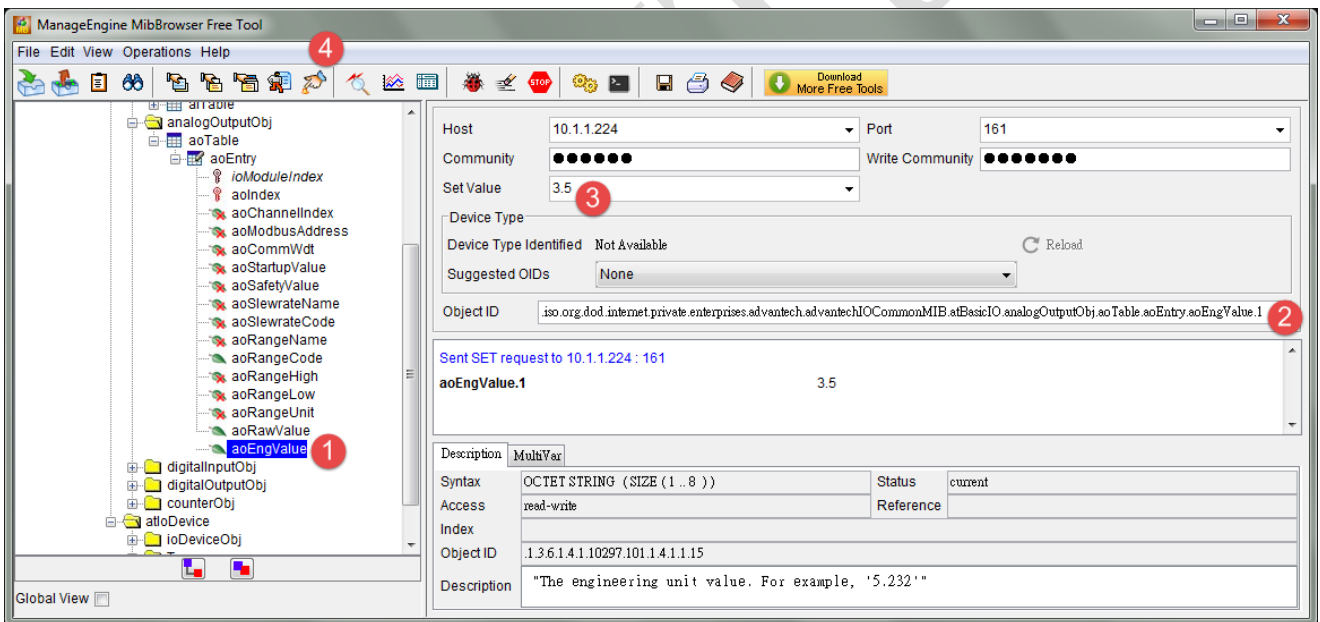


- Select OID "dovalue"
- Type in the channel number (N+1) and the value you want to set, here we enter "1" for to make DO channel to logic high status.
The OID for "dovalue" is 1.3.6.1.4.1.10297.101.1.6.1.11, Here we use 1.3.6.1.4.1.10297.101.1.6.1.11.1 for set the DO channel 0 of ADAM-6051.
- Click "SET SNMP variable" icon  to send SNMP set request

d. You will see the DO result of DO channel 1 when refreshing the I/O status of Utility.



For AO module (Use ADAM-6224 as an example)



a. Select OID “aoEngvalue”

b. Type in the channel number (N+1) and the value you want to set, here we enter “3.5”

The OID for “aovalue” is 1.3.6.1.4.1.10297.101.1.4.1.1.15, Here we use 1.3.6.1.4.1.10297.101.1.4.1.1.15.1 for set the AO channel 0 of ADAM-6224.

c. Click “SET SNMP variable” icon  to send SNMP set request

d. You will see the AO result of AO channel 1 when refreshing the I/O status of Utility.

ADAM-6224 (MODBUS) Locate

DI | **AO**

Hide Setting Panel

Output Range

Channel:

Range:

Slew Rate:

Safety Function Enable

Calibration

Set Value

Channel:

Value:

-10 10

Output Startup

Channel Information

Channel setting | Modbus (Present)

Channel	Value	Description
0	3.504 V	+/- 10 V
1	0.002 V	+/- 10 V
2	0.002 V	+/- 10 V
3	0.002 V	+/- 10 V

ADVANTECH