

UTC-315

15.6" Ubiquitous Touch Computer

UTC-315D with Intel® Celeron® J1900

UTC-315G with Intel® Celeron® N3350/Pentium® N4200



DeviceOn/iService

Features

- Low power and fanless system design
- Built in Intel Celeron® J1900 (UTC-315D) and Pentium® N4200 (UTC-315G)
- 15.6" monitor with 16:9 widescreen display
- IP65-rated front panel for water and dust resistance
- Supports both landscape and portrait screen orientations
- VESA 75 mm standard mounting holes for varied mounting demands
- Detachable frame design for panel mount applications
- Support DeviceOn/iService software for remote device management (UTC-315D only)
- Support TPM 2.0 (UTC-315G, optional)



Introduction

UTC-315 is the multi-purpose all-in-one computing system which equipped with wide format, touch based LCD panel. It is easy to integrate key peripherals and display systems for diversified self-service and interactive signage deploy in different application areas. With the removable frame, the system also could fulfill industries or control system applications with panel mounting design. UTC series touch panel computers are the best investments to enhance user satisfaction, further brand equity, and maximize business profits.

Moreover, UTC-315 is equipped with Advantech's DeviceOn/iService software, which is a next-generation unified device management solution based on the WISE-DeviceOn platform. With support for batch operations and multi-device control, DeviceOn/iService enables easy device configuration and deployment for convenient remote device management.

Specifications

Model	UTC-315D		UTC-315G
Processor System	CPU	Intel® Celeron® J1900	Intel® Pentium® N4200 (Default) Intel® Celeron® N3350
	Basic Frequency	2.0 GHz (Quad-Core)	N4200: 1.1GHz (Quad-Core) N3350: 1.1GHz (Dual-Core)
	L2 Cache MB	2MB	L2 Cache 2MB
	Memory	1 x 204pin SO-DIMM DDR3L 1333 MHz up to 8 GB	1 x 204pin SO-DIMM DDR3L 1866 MHz up to 8GB
	HDD	1 x 2.5 internal SATA HDD bay	
	Network	2 x Gigabit Ethernet ports (RJ-45)	
	I/O ports	1 x RS-232 1 x RS-232 / 422 / 485 5 x USB 2.0 / 1 x USB 3.0 2 x Gigabit Ethernet (RJ-45) 1 x HDMI 1 x RJ11 (12V output only) Audio Line-out x 1, Mic-in x 1	1 x RS-232 1 x RS-232 / 422 / 485 2 x USB 2.0 / 4 x USB 3.0 2 x Gigabit Ethernet (RJ-45) 1 x HDMI 1 x RJ11 (12V output only) Audio Line-out x 1, Mic-in x 1
	Stereo Speaker	2Wx2	
	BUS expansion	Full-size MiniPCIe/mSATA	1 x Full-size MiniPCIe for mSATA SSD 1 x M.2 2230 E-Key
	Mounting	VESA 75 x 75; crew Size: M4, 10mm	
	Dimension (W x H x D)	402 x 260 x 39.7 mm	
	Weight	3.5 kg	
Security	TPM2.0		Optional
OS support		WES 7P 32bit WES 7E 32bit Windows Pro Embedded 7 SP1 64bit WES8 64bit Windows Embedded 8.1 Industry Pro 64bit Win 10 IoT Enterprise 64bit Linux Android 6.0	Win 10 IoT Enterprise 64bit Android 10.0 Linux
Environmental Specifications	Operating Temperature	0 ~ 40° C (32 ~ 104° F)	
	Relative Humidity	10 ~ 95% @ 40° C non-condensing	
	Vibration	0.5G	
	Shock	10 G peak acceleration (11 msec. duration)	
	EMC/ Safety	CE, FCC, UL, CCC, CB, BSMI, BIS, UKCA	
	Front Panel Protection	IP65/ NEMA4 Compliant	

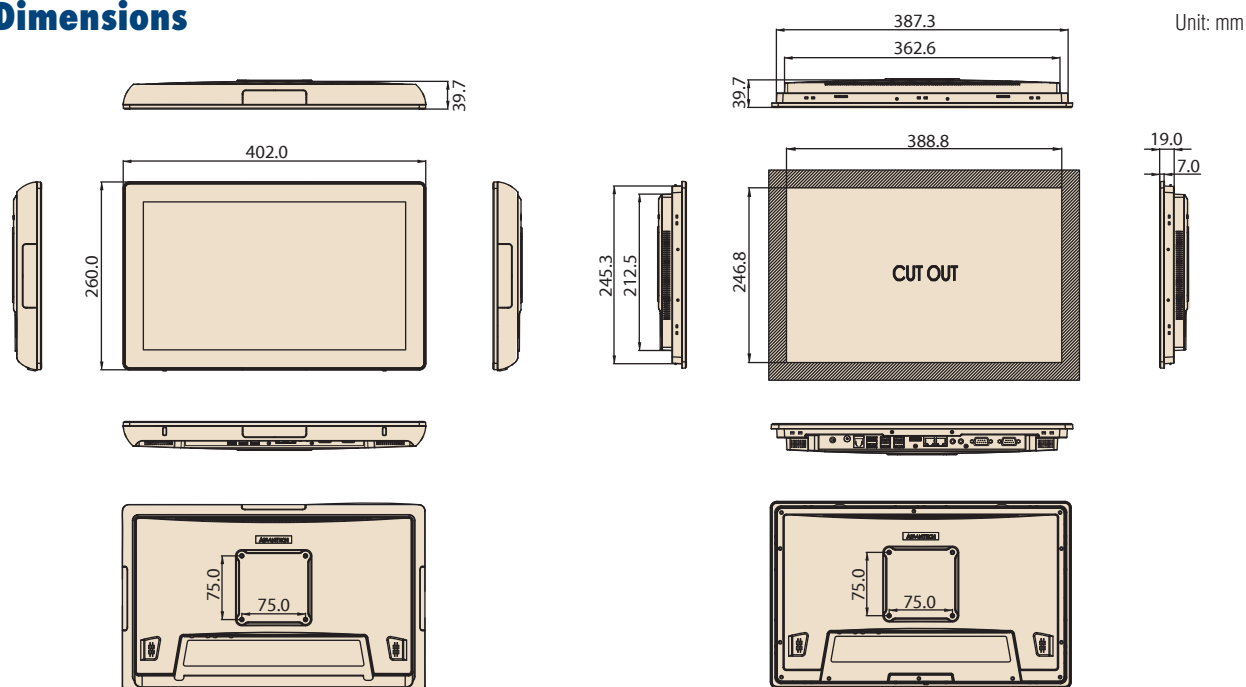
Specifications (Cont.)

Power Supply	Input Voltage	12V _{DC} *12-30V _{DC} Optional	
	Power Consumption	Typical 32W, Max. 70W	
	Adapter	12V = 7A, 84W or 12V = 8A, 96W ITE adapter (dependent on stock)	
LCD Display	Size	15.6" TFT LCD	15.6" TFT LCD
	Max Resolution	1366 x 768 (FHD 1920 x 1080 Optional)	1920 x 1080
	Max Color	262K	262K
	Pixel Pitch (um)	252(H) x 252(V)	252(H) x 252(V)
	Brightness (cd/m²)	220 (Typical)	220 (Typical)
	View Angle	90° /60° (170°/ 170° Optional)	90°/60° (170°/170°optional)
Touch Screen	Type	Analog Resistive 5-wires (Res. Flat Glass) / Projected Capacitive Touch Panel (Pcap. Flat Glass) / Glass Panel	
	Light Transmission	Res. Touch : 80% ± 5% / P-Cap Touch : 90% ± 2%	
	Controller	COM interface / USB interface	
DeviceOn/iService Remote Device Management	Operating System	Windows 10	
	Common Controls (Reboot, Shutdown)	✓	
	Remote desktop	✓ (VNC)	
	Audio Controls	✓*	
	Connection Status	✓	
	Hardware Status	✓*	
	Hard Disk Status	✓*	
	Batch Operation Support	✓	
	OTA Storage Management	FTP	
	OTA Software Updates	✓	
	Software Watchlist	✓	
	Software Start/Stop	✓*	
Dependant on device model	Peripherals Watchlist	✓	

*Dependant on device model

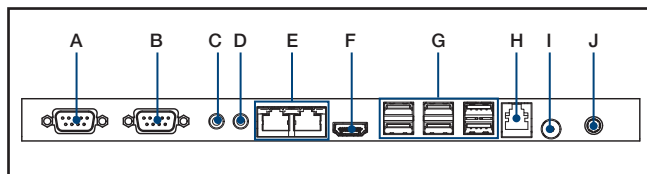
Note: DeviceOn/iService software must be downloaded from the Advantech website at <https://www.advantech.com/search/?q=DeviceOn%2FiService&st=support&sst=Utility>

Dimensions



Fully- Integrated I/O

UTC-315D/G



- | | |
|------------------------|---|
| A. COM1 | F. HDMI |
| B. COM2 | G. USB 2.0 x 5 / USB 3.0 x 1 (UTC-315D) |
| C. Line-out (UTC-315D) | USB 2.0 x 2 / USB 3.0 x 4 (UTC-315G) |
| D. Mic in (UTC-315G) | H. RJ11 (12V output only) |
| E. LAN ports x 2 | I. Power button |
| | J. DC input 12V |

Ordering Information

Part No.	US only P/N	Description
UTC-315DR-ATW0E	UTC-315DR-USW0E	15.6" White, Intel® Celeron® J1900, Res T/S, 4 GB RAM, IT Adapter
UTC-315DR-ATB0E	UTC-315DR-USB0E	15.6" Black, Intel® Celeron® J1900, Res T/S, 4 GB RAM, IT Adapter
UTC-315DP-ATW0E	UTC-315DP-USW0E	15.6" White, Intel® Celeron® J1900, PCap T/S, 4 GB RAM, IT Adapter
UTC-315DP-ATB0E	UTC-315DP-USB0E	15.6" Black, Intel® Celeron® J1900, PCap T/S, 4 GB RAM, IT Adapter
UTC-315GR-ATW0E	UTC-315GR-USW0E	15.6" White, Intel® Pentium® N4200, Res T/S, 4 GB RAM, IT Adapter
UTC-315GR-ATB0E	UTC-315GR-USB0E	15.6" Black, Intel® Pentium® N4200, Res T/S, 4 GB RAM, IT Adapter
UTC-315GP-ATW0E	UTC-315GP-USW0E	15.6" White, Intel® Pentium® N4200, PCap T/S, 4 GB RAM, IT Adapter
UTC-315GP-ATB0E	UTC-315GP-USB0E	15.6" Black, Intel® Pentium® N4200, PCap T/S, 4 GB RAM, IT Adapter

*White Touch Bezel could be customized by customer request with MOQ

UTC-315 WiFi Ordering Information

Part No.	US only P/N	Description
UTC-300P-W11E	UTC-300P-W11U	WiFi Kit for UTC-315D (MiniPCIe, WiFi and Bluetooth)
UTC-300P-W12E	UTC-300P-W12U	WiFi Kit for UTC-315G (M.2 2230, WiFi and Bluetooth)
UTC-300P-W13E	NA	WiFi Kit for UTC-315D
UTC-300P-W14E	NA	WiFi Kit for UTC-315G

Installation Accessory

Part No.	US only P/N	Description
UTC-300P-D10E	UTC-300P-D10U	Desk Stand, Single Color-Silver (UTC-315 series)
UTC-T01-STANDE	Not applicable	Triangle shape floor stand (UTC-315/UTC-318/UTC-320 series)
UTC-H01-STANDE	Not applicable	H-shaped floor stand (UTC-315/UTC-318/UTC-320 series)
UTC-PANEL-MOUNT6E	UTC-PANEL-MOUNT6U	Panel mount Kit (UTC-315 series)
ARES-12240-AR01100	Not Applicable	Wall Mount Kit, support 2~10kg, VESA 75/100mm (Tilttable)
ARES-12250-L101000	Not applicable	Wall Mount Kit, Max. support 25kg, VESA 75/100mm (Fixed)

Peripherals for UTC-300 series

Part No.	US only P/N	Description
UTC-300P-C20E	UTC-300P-C20U	5M Camera Module, White, for UTC-300 series
UTC-300P-C21E	UTC-300P-C21U	5M Camera Module, Black, for UTC-300 series
UTC-300P-M20E	UTC-300P-M20U	Magnet Strip Reader, White, for UTC-300 series
UTC-300P-M21E	UTC-300P-M21U	Magnet Strip Reader, Black, for UTC-300 series
UTC-300P-R20E	UTC-300P-R20U	RFID Reader, White, for UTC-300 series
UTC-300P-R21E	UTC-300P-R21U	RFID Reader, Black, for UTC-300 series
UTC-300P-S20E	UTC-300P-S20U	Smart Card Reader, White, for UTC-300 series
UTC-300P-S21E	UTC-300P-S21U	Smart Card Reader, Black, for UTC-300 series
UTC-300P-B60E	UTC-300P-B60U	2D Barcode Reader, White for UTC-300 series
UTC-300P-B61E	UTC-300P-B61U	2D Barcode Reader, Black for UTC-300 series

Power Cord Ordering Information

Part No.	Description
1702002605	Power cord 2P FRANCE 10A/16A 220V 1.83M 90D
1702002600	Power Cord 3P UL/CSA(USA) 125V 10A 1.83M 180D
1700000596-11	Power Cord (China) CCC, 10A 250V, 3P 1830mm
1700018704	Power Cord UK BSI 2P 10A 250V 180cm 18AWG
1700000237	Power Cord PSE 3P 12A 125V 183cm
1700001714	Power Cord BSMI 3P 7A 125V 183cm

DeviceOn/iService

Unified Remote Device Management Software



Features

- Supports Advantech devices equipped with Windows, Android, and Linux OS
- Flexible device, location, user, and permissions management
- Enables remote monitoring and control of hardware, software, and peripherals
- Supports over-the-air (OTA) firmware and software updates
- Ensures quick, easy, and secure device onboarding
- RESTful APIs for third-party system integration

Introduction

Advantech's DeviceOn/iService is a next-generation unified device management solution based on the WISE-DeviceOn platform. Designed to enable centralized monitoring and remote management, DeviceOn/iService supports Advantech devices equipped with Windows, Linux, or Android operating systems. The software also supports the management of applications and integrated peripherals, such as a barcode scanner, card reader, camera, and printer. Users can remotely access and control connected devices, take screenshots, rollout OTA upgrades, and use remote desktop capabilities for troubleshooting from any location at any time. Moreover, DeviceOn/iService supports batch operations to facilitate the management of multiple devices simultaneously for easy and convenient device configuration and deployment.

Total Management



Devices & Hardware

- Windows, Linux, Android
- Hardware, storage, battery



Software & Peripherals

- Software monitoring & access
- Screens, USB devices, printers



Open for Expansion

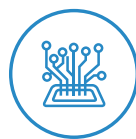
- Peripheral integration
- Open APIs for integration

Remote Access



Real-Time Monitoring

- Connection/hardware status
- Software/peripheral status
- Failure notifications



Remote Controls

- Power controls
- Audio, backlight controls
- Software controls



Troubleshooting

- Screenshots
- Remote desktop support

Operational Efficiency



OTA updates

- System/software updates
- File repository management
- App store



Batch Controls

- 1-to-many batch reboot, etc.
- Time-saving tasks



Setup Booster

- Software/peripheral watchlist
- Roles, rule templates

Note: Some functions may vary according to the product

System Architecture

