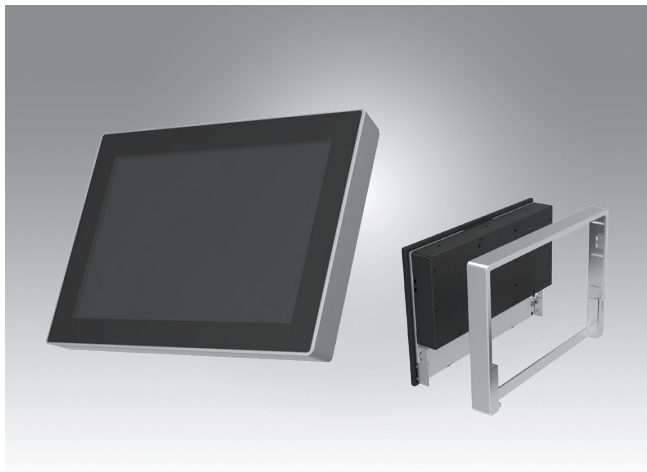


UTC-510

10.1" Ubiquitous Touch Computer
UTC-510D with Intel® Atom® E3825 & Celeron® J1900
UTC-510G with Intel® Celeron® N3350 & Pentium® N4200



Features

- Low Power & Fanless design
- Built-in Intel® Atom® E3825/Celeron® J1900 (UTC-510D)
- Built in Intel® Celeron® N3350/Pentium® N4200 (UTC-510G)
- Providing Natural Viewing Experience with 16:10 10.1" Display
- Landscape & Portrait screen mode support by different applications
- VESA 75 mm standard mounting holes for varied mounting demands
- Detachable plastic frame design for panel mount applications



Introduction

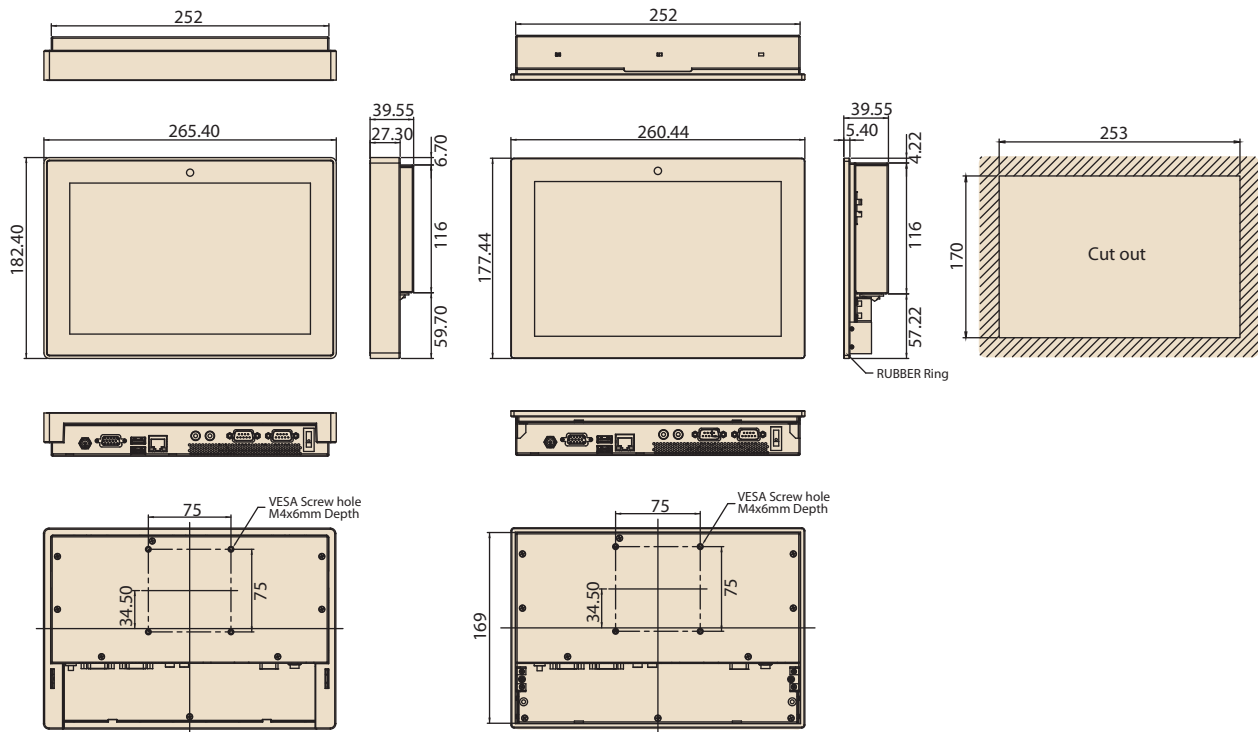
UTC-510 features an all-in-one computing system equipped with wide format, touch based LCD panel. It is easy to integrate key peripherals and display systems for diversified self-service and interactive signage deploy in different application areas. The systems deliver updated information with well-designed interactive interfaces, fully ensure relevant content and targeted promotions are delivered. UTC series touch panel computers are the best investments to enhance user satisfaction, further brand equity, and maximize business profits.

Specifications

Processor System	CPU	Intel® Atom® E3825 (UTC-510D)	Intel® Celeron® J1900 (UTC-510D)	Intel® Celeron® N3350 (UTC-510G)	Intel® Pentium® N4200 (UTC-510G)	
	Base Frequency	1.33 GHz (Dual-Core)	2 GHz (Quad-Core)	1.10 GHz (Dual-Core)	1.10 GHz (Quad-Core)	
	Cache	L2 Cache 1MB	L2 Cache 2MB	L2 Cache 2MB	L2 Cache 2MB	
	Memory	1 x 204 pin SO-DIMM DDR3L 1066 MHz up to 8 GB	1 x 204 pin SO-DIMM DDR3L 1333 MHz up to 8 GB	1 x 204 pin SO-DIMM DDR3L 1866 MHz up to 8 GB		
	HDD	1 x 2.5 internal SATA HDD bay				
	Network (LAN)	1 x Gigabit Ethernet ports (Supports Wake on LAN)				
	I/O ports	2 x RS-232 COM (COM1 RS-422/485 supported)*			2 x RS-232 COM (COM1 RS-422/485 supported)*	
		1 x USB 2.0 / 1 x USB 3.0 / 2 x USB 2.0 (optional)*			2 x USB 3.0 / 2 x USB 2.0 (optional)*	
	Stereo Speaker	1 x Gigabit Ethernet (RJ-45)			1 x Gigabit Ethernet (RJ-45)	
	Bus expansion	1 x VGA			1 x VGA	
Mounting	Audio Line-out x 1, Mic-in x 1			Audio Line-out x 1, Mic-in x 1		
Dimensions (W x H x D)	2 W x 1			1 Full size MiniPCle		
Weight	1 Half size MiniPCle			1 Half size mSATA		
OS Support	VESAs 75 x 75 mm			1 Full size MiniPCle		
Front Panel Protection	265.40 x 182.40 x 39.55 mm			1 Half size mSATA		
	1.80 kg (3.97 lbs)					
Environmental Specifications	WES7P 32/64bit			Window 10 IoT Enterprise		
	Windows Pro Embedded 7 Pro 32/64bit			Linux Ubuntu 20.04		
Power Supply	WES8S 32bit			Android 10		
	Windows Embedded 8.1 Industry Pro 64bit					
LCD Display	Win 10 IoT Enterprise 64bit					
	Linux Ubuntu 16.04					
Touch Screen Option (PE/GE)	Android 6.0					
	IP 65 Compliant					
Power Supply	Operating Temperature	0 ~ 40° C (32 ~ 104° F)	0 ~ 35° C (32 ~ 95° F)	0 ~ 45° C (32 ~ 113° F)		
	Relative Humidity	10 ~ 95% @ 40° C non-condensing				
LCD Display	Vibration	1Grms				
	Shock	5G peak acceleration (11 msec. duration)				
Touch Screen Option (PE/GE)	Certification	CE (No RED certification), FCC, CB, UL, CCC, BSMI				
	Input Rating	12 V/3 A (36W ITE Adapter)				
LCD Display	Power consumption	Typical 10W				
	Size/Type	Max. 20W				
LCD Display	Max. Resolution	10.1" TFT LCD with LED backlight				
	Max. Color	1280 x 800				
LCD Display	Pixel Pitch (um)	16.7M				
	Brightness (cd/m²)	169.5 x 169.5				
LCD Display	View Angle	350				
	Camera	170 / 170				
Touch Screen Option (PE/GE)	Type	5 Mega Pixel (Optional)				
	Light Transmission	Projected Capacitive. Glass Panel				
Touch Screen Option (PE/GE)	Controller	80% ± 5% / 90%				
		USB Interface / -				

Dimensions

Unit: mm



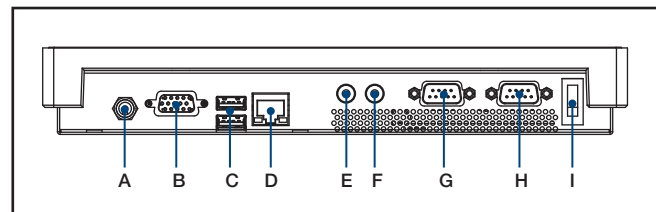
Ordering Information

Part No.	Description
UTC-510DP-ATB0E	10.1" Intel Atom E3825 Based fanless UTC with PCT.T/S 4GB RAM
UTC-510DG-ATB0E	10.1" Intel Atom E3825 Based fanless UTC with Glass 4GB RAM
UTC-510DP-ATB1E	10.1" Intel Celeron J1900 Based fanless UTC with PCT.T/S 4GB RAM
UTC-510GP-ATB0E	10.1" Intel Celeron N3350 Based fanless UTC with PCT.T/S 4GB RAM
UTC-510GG-ATB0E	10.1" Intel Celeron N3350 Based fanless UTC with Glass 4GB RAM
UTC-510GP-ATB1E	10.1" Intel Pentium N4200 Based fanless UTC with PCT.T/S 4GB RAM
UTC-510GG-ATB1E	10.1" Intel Pentium N4200 Based fanless UTC with Glass 4GB RAM
UTC-510GP-ATN0E	10.1" Intel Celeron N3350 Based fanless UTC with PCT.T/S 4GB RAM, Ant
UTC-510GP-ATN1E	10.1" Intel Pentium N4200 Based fanless UTC with PCT.T/S 4GB RAM, Ant
1700001524	Power Cord 3P UL 10A 125V 180cm
170203180A	Power Cord 3P UK 2.5A/3A 250V 1.83M
170203183C	Power Cord 3P Europe (WS-010+WS-083)183cm
1700021374-01	Power Cord 3P CCC 2.5A 250V 250cm (IEC60320-C5)
1960073820N001	IO Cover UTC-510
1931031500	Screws for IO Cover UTC-510(*2)

Peripherals for UTC-510 series

Part No.	Description
UTC-510P-F01E	Finger Print Reader For UTC-510 (USB connection)
UTC-510P-R01E	RFID Reader For UTC-510 (USB connection)
UTC-510P-B03E	2D Barcode Scanner - Honeywell N3680 for UTC-510 (USB connection)
UTC-510P-M01E	Magnet Strip Reader For UTC-510 (USB connection)
UTC-510P-S01E	Smart Card Reader For UTC-510 (USB connection)

Fully- Integrated I/O



- A. DC Power jack
- B. VGA
- C. USB 3.0 X 1, USB 2.0 x 1 (for UTC-510D)
USB 3.0 X 2 (for UTC-510G)
- D. LAN Ports
- E. MIC-in
- F. Line-out
- G. COM 2
- H. COM 1
- I. Power switch

Installation Accessory

Part No.	Description
UTC-WALL-MOUNT1E	Wall Mount kit for UTC-520/515/510
UTC-WALL-MOUNT4E	UTC-510 VESA mount (75 x 75)
UTC-S03-STANDE	UTC 75*75 mm Desktop Stand
UTC-510-STAND0E	UTC-510 desktop stand
1960074091N000	UTC-510 Panel Mount Clamper (*4)
1930005598	UTC-510 Panel Mount Screw (*4)

WIFI ordering information for UTC-510 series

Part No.	Description
UTC-510W-A0E	UTC-510 WIFI KIT, DNXA-116, 2Tx/2Rx, Antennas
UTC-510W-A1E	UTC-510 WIFI KIT, DNXA-92, 2Tx/2Rx, BT 4.0 Antennas
UTC-510W-A2E	UTC-510 WIFI KIT, DNXA-222, BT, 2Tx/2Rx, BT 4.2, Antennas